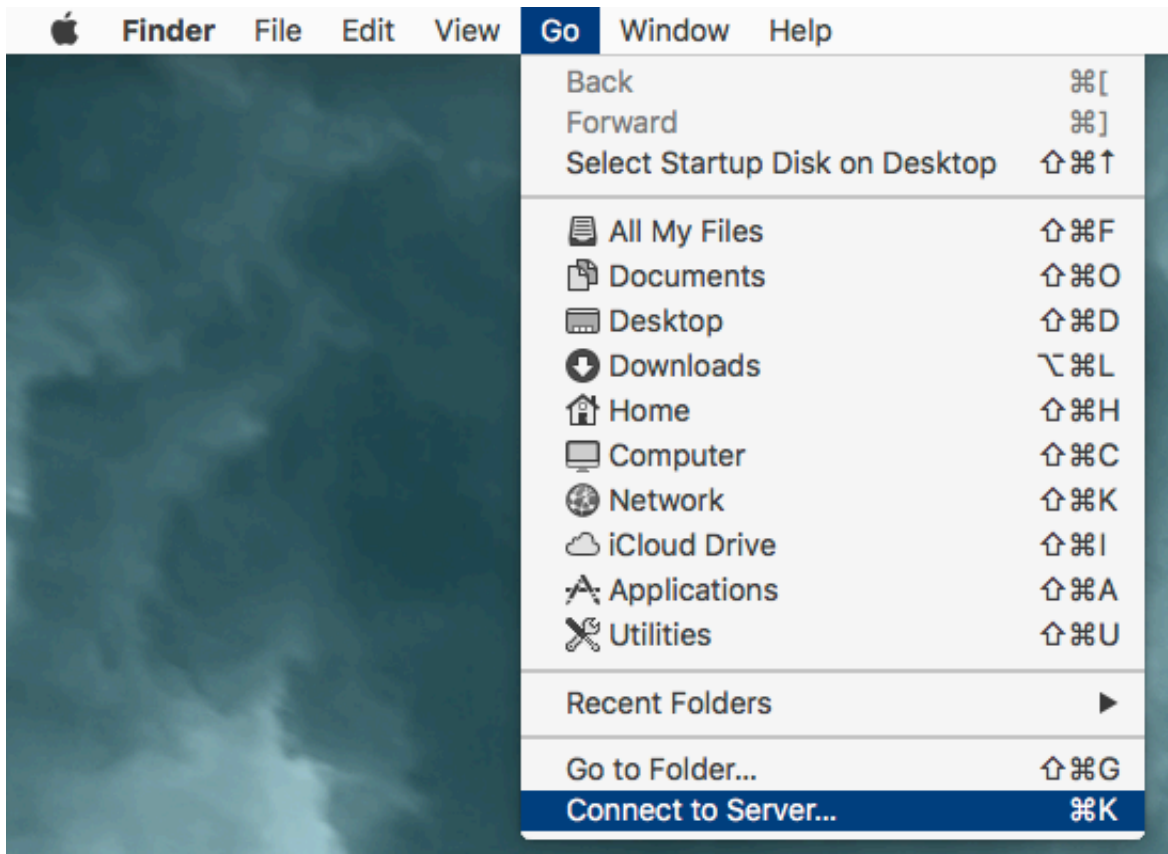




0-WEB.ru

[Mac Os X Login For Windows](#)



[Mac Os X Login For Windows](#)



0-WEB.ru

---

10 x Something Mac users often need to do is be able to access files stored on Windows shares.. Some shares will not work with the keychain though This is pretty nice if you are working a lot between OS X and Windows, and need to move files between the two.

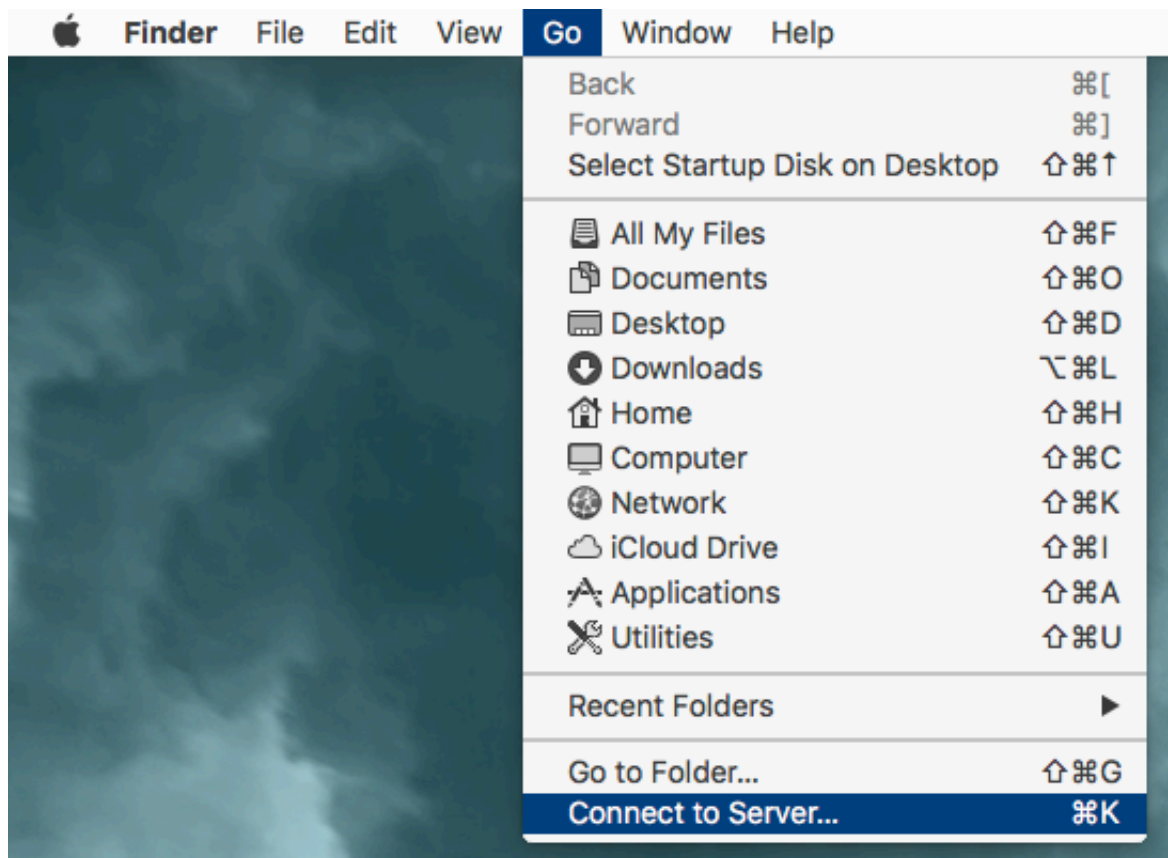
- [1. login windows](#)
- [2. login windows 10](#)
- [3. login windows without password](#)

Mounting the Windows Share When you are in Finder you can click Go and Connect to Server or you can type Command + K to get to the same menu.. 6 Snow Leopard, 10 7 Lion, 10 8 Mountain Lion, and OS X Mavericks 10 9, and OS X Yosemite 10.

## login windows

login windows 10, login windows 10 without password, login windows, login windows live, login windows without password, login windows 10 as administrator, login windows 365, login windows 7 without password, login windows as administrator, login windows 10 without password or pin, login windows live id [Mac Os X 10.6 Iso For Vmware](#)

Generally leave this unchecked Use UNC path from Active Directory to derive network home location - Gets home folder from users AD profile.. This process of connecting to the Mac should be identical from Windows XP, Windows Vista, Windows 7, Windows 10, and Windows 8 or RT, and enabling file sharing on the Mac is the same in Mac OS X 10.. If your share requires authentication, it may be possible to add the username and password into your keychain with the check box in the authentication window.. If your Windows share requires authentication it will ask you for that info here. [Kitchendraw 4 5 Keygens](#)



[Download free](#)

[Fallout 4 Unlimited Building Mod last version](#)

---

## login windows 10

[Poovum Kaatrum Serum Pothu Ringtone Download](#)

The internet is littered with ways to write scripts to allow you to do this But OS X makes it pretty simple if you are just needing to add the share to your machine.. Unbind - Pretty much leave this alone Removing the Directory server does the same thing.. Network protocol to be used: - Generally leave as SMB unless you have an OS X share serving it via AFP.. You will need to be in System Preferences for this, which you can get to by clicking on the Apple Menu and then going to System Preferences.  
[Ucpool maxsea time zero](#)

## login windows without password

[Amazon.it: Learning Unix For Mac](#)

Require confirmation before creating a mobile account - Prompts users to create the folder.. Now if you have Connected Servers showing on your desktop, it will show up on your desktop an in Finder.. Create mobile account at login - Creates a local Home folder If using roaming profiles in AD it will sync this folder to the Home folder on the Windows share.. Making the Share Mount at Login To keep the share showing up when you have to log out seems pretty difficult.. Here's a good way to mount those share, and keep them mounting at login Issues with outlook for mac 2011 wont connect with imap.. Then you will just drag the share from your desktop or Finder window into the Login Items list.. In Server Address you will need to put the location of you Windows share with this format smb://server/share where server is the name or IP address of your Windows machine and share is going to be the folder or drive you want to mount.. Then you will go to Accounts Once in Accounts, you will need go to the Login Items tab. ae05505a44 [Download Beyond Compare Tool For Windows 10](#)

ae05505a44

[Paypal Hack 2019](#)